



SRI GURU TEGH BAHADUR KHALSA COLLEGE
University of Delhi



PROSPECTUS

2025-26





*Sri Guru Tegh Bahadur
(1621–1675)*

ਭੈ ਕਾਹੂ ਕਉ ਦੇਤ ਨਹਿ ਨਹਿ ਭੈ ਮਾਨਤ ਆਨ ॥
ਕਹੁ ਨਾਨਕ ਸੁਨਿ ਰੇ ਮਨਾ ਗਿਆਨੀ ਤਾਹਿ ਬਖਾਨਿ ॥

*He, who fears no one, nor makes others afraid;
says Nanak, O mind, He alone is wise, who knows his God.*

TABLE OF CONTENTS

<i>Preamble & Motto</i>	<i>Page 3</i>
<i>Governing Body</i>	<i>Page 4</i>
<i>Chairperson's Message</i>	<i>Page 5</i>
<i>Principal's Message</i>	<i>Page 6</i>
<i>About The College</i>	<i>Page 7</i>
<i>Courses Offered</i>	<i>Page 8</i>
<i>Total Seats Allocated</i>	<i>Page 9</i>
<i>Fee Structure For Undergraduate Courses</i>	<i>Page 10</i>
<i>Placements And Internships</i>	<i>Page 12</i>
<i>Research Centres</i>	<i>Page 13</i>
<i>Mata Gujri Library</i>	<i>Page 15</i>
<i>Infrastructural Amenities</i>	<i>Page 17</i>
<i>Mata Gujri Hostel And General Hari Singh Nalwa Hostel</i>	<i>Page 19</i>
<i>ECA Societies</i>	<i>Page 20</i>
<i>Sports</i>	<i>Page 21</i>
<i>NCC</i>	<i>Page 22</i>
<i>NSS</i>	<i>Page 23</i>

PREAMBLE

Sri Guru Tegh Bahadur Khalsa College, inspired by the profound legacy of its revered namesake—Sri Guru Tegh Bahadur Ji, who laid down his life for the preservation of human rights and the values of freedom and faith—stands as a beacon of knowledge, resilience, and inclusivity.

Rooted in the principles of cultural diversity, composite society, and social justice, the college offers an environment that not only caters to the academic aspirations of students but also ensures their holistic development. At the heart of its mission lies a commitment to fostering a spirit of enquiry, intellectual curiosity, and social responsibility in young minds.

We nurture a community that upholds noble values, encourages environmental consciousness, and cultivates a prejudice-free conscience. While we honour and preserve our rich traditions, we embrace modernity with open arms, continuously evolving through collective efforts of our dedicated teaching and non-teaching staff.

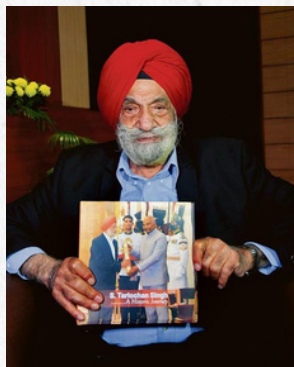
With a strong focus on academic excellence, faculty development, and state-of-the-art infrastructure, Sri Guru Tegh Bahadur Khalsa College remains steadfast in its vision—to shape responsible, enlightened, and empowered citizens of the nation.

MOTTO



The college is dedicated to instilling values of community service, integrity, empathy, and compassion toward all beings. Its motto, “ਆਗਾਹਾ ਕੂ ਤ੍ਰਾਪਿ” or “March Forward,” reflects a progressive mindset that encourages students to adapt, innovate, and contribute to reshaping the world with a fresh perspective.

GOVERNING BODY



Chairman
S. Tarlochan Singh



Vice Chairman
S. Rishipreet Singh Sachdeva



Treasurer
S. Inderpreet Singh Kochhar

OTHER MEMBERS

S. Inderjeet Singh Monty
(Member)

S. Amarjit Singh
(Member)

Prof. Radhe Shyam Sharma
(Member)

Ms. Rupinder Kaur
(Member)

S. Paramjeet Singh
(Member)

Dr. Anuradha Gupta
(Teacher Representative)

S. Balinder Singh (Vicky)
(Member)

S. Nirmal Singh
(Member)

Dr. Daljeet Singh Bajaj
(Teacher Representative)

S. Ramandeep singh Grover
(Member)

Prof. Surendra Kumar Sia
(Member)

Mr. Jaspal Singh
(Non-teaching
Representative)

Chairman's Message

S. Tarlochan Singh

(Former Chairman National Minority Commission & Member of Rajya Sabha)



Sri Guru Tegh Bahadur Khalsa College is a vibrant institution where the timeless values of Sikhism meet a modern, progressive approach to education. As we observe the 350th Martyrdom Anniversary of Sri Guru Tegh Bahadur Ji, we are reminded of his supreme sacrifice for religious freedom and human dignity. His unwavering courage and commitment to justice continue to inspire our mission and values.

Our faculty, guided by Sikh principles, is deeply committed to nurturing students who think critically, act with compassion, and grow into responsible individuals. Education here is not limited to academics—it is a journey of holistic development aimed at creating well-rounded, value-driven citizens.

We also understand the importance of supporting students beyond the classroom. To ensure their mental and physical well-being, we've strengthened our student care initiatives by appointing a professional counseling psychologist and a medical practitioner. We aim to create an environment where students feel safe, supported, and empowered to thrive.

Under the visionary leadership of Principal Prof. Gurmohinder Singh, the college continues to flourish—carrying forward its legacy of truth, service, and compassion. As Chairman, I feel privileged to witness this ongoing growth. We remain steadfast in our commitment to nurturing future leaders who are deeply rooted in the ideals of the Sikh Gurus.



Principal's Message

Prof. Gurmohinder Singh

Since its establishment in 1951, Sri Guru Tegh Bahadur Khalsa College, a constituent college of the University of Delhi, has remained a torchbearer for academic excellence and all round development of the learners enrolled in it. Drawing inspiration from the holy teachings of the Sikh Gurus and blurring the barriers of class, caste and creed, the college is committed to shaping the career and personality of the students and has made a name for itself in the academic and cultural domain of the University of Delhi.

The college is well empowered by technology to facilitate teaching-learning process. Its Centre for e-learning, supported by the UGC under the Madan Mohan Malviya Teacher Training scheme, aims to train teachers and scholars across the nation in quality pedagogical practices. The college organizes seminars, conferences, research projects and professional development programmes to the benefit of both the teachers and the students.

One of the finest libraries, among the colleges under the University of Delhi, is housed in this college. It is an inexhaustible reservoir of knowledge and wisdom where students can intellectually enrich themselves on regular basis.

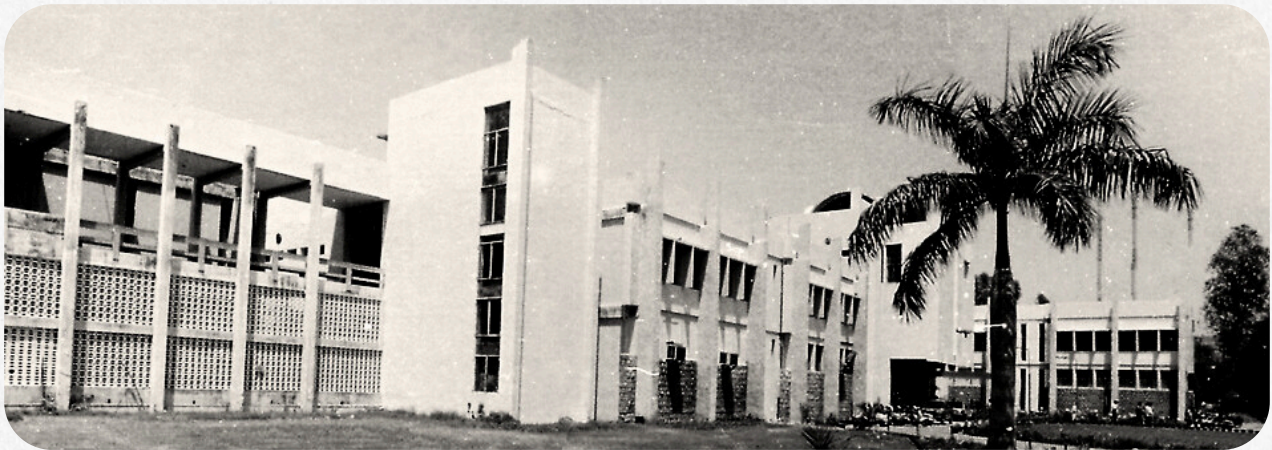
As a patron of various sports, the college is well known for achieving great recognitions in the arena of the same. Its various Societies enable the students to explore their talents and showcase their best performances.

A good number of alumni are well established professionals in various fields and have earned many laurels for the college. The college has acquired 'A' grade in NAAC accreditation and continues its journey towards further excellence.

I extend a hearty welcome to all who have secured admission and wish them a joyful, meaningful and memorable stay in college.



ABOUT THE COLLEGE



Sri Guru Tegh Bahadur Khalsa College, a premier constituent college of Delhi University, was established in 1951 during a pivotal time in India's history, following independence and the trauma of Partition. Created to serve Punjabi refugees, it began as a modest institution in Dev Nagar, Karol Bagh, with its first batch appearing for Delhi university exams in 1952.

In 1971, the college moved to its current campus in University Enclave, inaugurated by Smt. Indira Gandhi in 1973. Initially offering undergraduate courses in Humanities, Commerce, and Sciences, it has since expanded its infrastructure with modern academic blocks, labs, a well-equipped library, hostels, digital learning centres, and smart classrooms.

Today, the college offers 19 undergraduate and 12 postgraduate programs across various disciplines. It also provides nine certificate courses in Indian and foreign languages, three undergraduate diplomas, and a postgraduate diploma in Forensic Science, open to both enrolled and external students. In line with the NEP 2020, students can choose from a broad range of subjects, including Skill Enhancement and Value-Added Courses, supported by state-of-the-art laboratories and facilities like the Guru Har Rai Botanical Garden.

The Mata Gujri Library houses around 146,000 books, Indian journals, newspapers, audiobooks, and a special Sikh Studies section. It is linked to the Delhi university Library System, UGC-INFONET, and NLIST, offering access to a wide range of digital resources and a vibrant reading environment.

The Guru Angad Dev Malaviya Mission Teacher Training Centre, backed by the UGC and Ministry of Education, organizes national faculty development programs, NEP orientation courses, and MOOCs.

The college boasts a national-level sports complex with facilities for cricket, hockey, basketball, tennis, volleyball, and more. Annual tournaments like the Sahibzada Zorawar Singh T-20 and Baba Deep Singh Hockey Tournament attract top-level athletes. Internal events such as 'Khelutsav' and Yoga Day further promote a vibrant sports culture.

A 147-capacity girls' hostel offers air-conditioned rooms with attached washrooms and all essential amenities to support academic life.

The Master Tara Singh Auditorium, built in 2007, is the cultural heart of the college, hosting events by over 35 academic, co-curricular, and cultural societies throughout the year, especially during the annual festival "Lashkara."

The college adheres strictly to Delhi university regulations, ensuring academic rigor and a progressive learning environment that reflects the spirit of Delhi University.

COURSES OFFERED

Sri Guru Tegh Bahadur Khalsa College, a premier institution under the University of Delhi, offers a comprehensive range of postgraduate programs designed to cultivate academic excellence and research acumen. The college provides Master of Arts (M.A.), Master of Science (M.Sc.) and Master of Commerce (M.Com.) program for those pursuing advanced studies in commerce.

Admissions to these programs are conducted through the Common University Entrance Test (CUET-PG), ensuring a transparent and merit-based selection process. The college boasts state-of-the-art laboratories, a well-stocked library, and experienced faculty members dedicated to providing a conducive learning environment. Beyond academics, students are encouraged to participate in various co-curricular and extracurricular activities, promoting holistic development. Located in the heart of Delhi's North Campus, Sri Guru Tegh Bahadur Khalsa College offers an enriching postgraduate experience that combines tradition with modernity.

The College offers a variety of courses to cater the students from all walks of life, desiring all kinds of futures:

Undergraduate Programs:

B.A. Program; B.A. Hons. in Economics, English, Hindi, History, Political Science, and Punjabi; **BBE; B.Com. Hons.; B.Com. Prog.; B.Sc. Hons.** in Botany, Chemistry, Computer Science, Electronics, Mathematics, Physics, Zoology; and **B.Sc. Prog.** in Life Sciences and Physical Sciences.

Postgraduate Programs:

M.A. in Economics, English, Hindi, History, Political Science, and Punjabi;
M.Sc. in Botany, Chemistry, Electronics, Mathematics, Physics, Zoology,
M. Com.

Diploma Courses

2 Year diplomas in German, Spanish, French, PG Diploma in Forensic Sciences

Certificate Courses

1 year certificate courses in Chinese, Korean, Japanese, Russian, Punjabi, and 3 month certificate course in Web Journalism, and Sports Economics and Marketing.

TOTAL SEATS ALLOCATED

S.No.	Course Name	Total Seats
1	B.A.(Hons.) English	40
2	B.A. (Hons.) Hindi	40
3	B.A. (Hons.) Punjabi	40
4	B.A. (Hons.) Economics	40
5	B.A. (Hons.) History	40
6	B.A. (Hons.) Political Science	40
7	B.A. (Hons.) Business Economics	40
8	B.Sc. (Hons.) Botany	40
9	B.Sc. (Hons.) Chemistry	20
10	B.Sc. (Hons.) Computer Science	46
11	B.Sc. (Hons.) Electronics	20
12	B.Sc. (Hons.) Mathematics	40
13	B.Sc. (Hons.) Physics	40
14	B.Sc. (Hons.) Zoology	40
15	B.Sc. (Prog.) Life Science	40
16	B.Sc. (Prog.) Physical Science with Chemistry	40
17	B.Sc. (Prog.) Physical Science with Computer Science/Informatics Practices	20
18	B.Com. (Hons.)	120
19	B.Com.	60
20	B.A Program (Economics + History)	12
21	B.A Program (Economics + Mathematics)	8
22	B.A Program (Economics + Music)	2
23	B.A Program (Economics + Political Science)	12
24	B.A Program (History + Music)	4
25	B.A Program (History + Political Science)	16
26	B.A Program (Mathematics + Music)	2
27	B.A Program (Mathematics + Political Science)	4
	TOTAL	866

50% OF SEATS ARE RESERVED FOR SIKH MINORITY STUDENTS.
ADMISSION OF PWD AND KM AS PER THE UNIVERSITY RULES

FEE STRUCTURE FOR UG COURSES (FIRST YEAR)

Items	Humanities Courses	Science Courses	Commerce Courses
Tuition Fee	₹180.00	₹180.00	₹180.00
Admission Fee	₹5.00	₹5.00	₹5.00
College Library and Reading Fee	₹400.00	₹400.00	₹400.00
House Examination Fee	₹200.00	₹200.00	₹200.00
Development Fee	₹5,000.00	₹5,000.00	₹5,000.00
Water and Electricity Charges	₹1,000.00	₹1,000.00	₹1,000.00
Garden Fee	₹400.00	₹400.00	₹400.00
General Fund (A)	₹7,185.00	₹7,185.00	₹7,185.00
Sports/Ground Development Fee	₹2,000.00	₹2,000.00	₹2,000.00
Student Welfare Fund	₹500.00	₹500.00	₹500.00
Student Aid Fund	₹350.00	₹350.00	₹350.00
Student Society Fund	₹3,350.00	₹3,350.00	₹3,350.00
College Student Union Fund	₹1,000.00	₹1,000.00	₹1,000.00
University Enrollment Number	₹250.00	₹250.00	₹250.00
Security	₹500.00	₹500.00	₹500.00
University Student Union	₹40.00	₹40.00	₹40.00
General Maintenance	₹3,000.00	₹3,000.00	₹3,000.00
University Development Fund	₹1,500.00	₹1,500.00	₹1,500.00

Prevention of Sexual Harassment Fee	₹10.00	₹10.00	₹10.00
University Library Fee	₹0.00	₹0.00	₹0.00
University Laboratory Fee	₹0.00	₹0.00	₹0.00
Laboratory Development Fund	₹0.00	₹6,000.00	₹6,000.00
University Library Development Fee	₹0.00	₹0.00	₹0.00
Training and Placement	₹300.00	₹300.00	₹300.00
Documentation Fee	₹300.00	₹300.00	₹300.00
Automation and ICT	₹1,500.00	₹1,500.00	₹1,500.00
Network Maintenance	₹500.00	₹500.00	₹500.00
Classroom AV Facilities	₹1,000.00	₹1,000.00	₹1,000.00
Students Projects and Research	₹300.00	₹300.00	₹300.00
University Student Welfare Fund	₹250.00	₹250.00	₹250.00
University Facilities and Service Charges	₹1,500.00	₹1,500.00	₹1,500.00
University Library Security Fee	₹0.00	₹0.00	₹0.00
Economically Weaker Section Support Fund	₹250.00	₹250.00	₹250.00
NCC	₹100.00	₹100.00	₹100.00
NCC & NSS	₹100.00	₹100.00	₹100.00
Student Fund (B)	₹18,650.00	₹24,600.00	₹24,600.00
Grand Total (A+B)	₹25,785.00	₹31,785.00	₹31,785.00

PLACEMENTS AND INTERNSHIPS

	Placement Statistics		Internship Statistics	
2023-24	Highest CTC	₹23.05 LPA	Highest Stipend	₹80K
	Average CTC	₹5.8 LPA	Average Stipend	₹20K
	Median CTC	₹6.05 LPA	Profiles	250+
	Gross CTC	₹9.97 CR	Offer Letters	400+
	Offer Letters	175+	Companies	325+
	Companies	103+		
	Placement Statistics		Internship Statistics	
2022-23	Highest CTC	₹21.5 LPA	Highest Stipend	₹80K
	Average CTC	₹6.48 LPA	Average Stipend	₹25K
	Median CTC	₹6.05 LPA	Profiles	250+
	Gross CTC	₹8.3 CR	Offer Letters	800+
	Offer Letters	130+	Companies	300+
	Companies	110+		
	Placement Statistics		Internship Statistics	
2021-22	Highest CTC	₹25 LPA	Highest Stipend	₹80K
	Average CTC	₹5.2 LPA	Average Stipend	₹20K
	Median CTC	₹5 LPA	Profiles	200+
	Gross CTC	₹8.07 CR	Offer Letters	700+
	Offer Letters	170+	Companies	300+
	Companies	70+		

RESEARCH CENTRES

Research and Development Cell

List of Projects Sanctioned in session 2023-2024:

Department	Name of PI	Title of Project	Allocation (in Rs)
Physics	Savinder Kaur	Pattern in Biological Systems	30,000
Physics	Kuldeep Kumar	To Study of PMN-PT single crystal	27,000
Chemistry	Manpreet Kaur	Synthesis, characterization and applications of vermiculite based composite materials	20,000
Electronics	Sukhbinder Singh Rait	Low Temperature Behavior of Semiconductor Devices	36,000
Mathematics	Dharmendra Kumar	Invariant Solutions for Higher Order Evolution Equations Using Lie Symmetry Analysis	15,000
Mathematics	Ruchi Kaur	Analytical Solutions of Non-linear Higher Order Partial Differential Equations	18,000
Electronics	Inderpreet Singh	To study the effect of film thickness on the efficiency and degradation rate in P3HT:PC70BM photovoltaic devices	44,000
Electronics	P. Arun	Fabrication of SnS channel device and its Characterization	30,000
Zoology	Harpreet Singh	Understanding the role of insects as transmitters of antibiotic resistance	44,000
Zoology	Radhika	Assessment of the Efficiency of Argemone Mexicana as a potential control agent of the red Cotton stainer, Dysdercus Koenigii	38,000
Botany	Inderdeep Kaur	India's Foreign Policy towards Conflicts: A Comparative Study of the Yugoslav Crisis and Arab-Israeli Conflicts	50,000
Botany	Surinder Kaur	To investigate relationship between phenology and various ecological factors and its role in P. Juliflora DC invasion success	Merged with RD/P/2023/022
Botany	Surinder Kaur	To investigate the role of soil microbial diversity in the invasion success of Prosopis juliflora	100,000

RESEARCH CENTRES

Centre for Disability Research and Training

For the longest time, disability has been understood as something particularly and peculiarly affecting an individual. It has been, for all this time, a void: something essentially missing from the structure of the human. Hence, the disabled human has been drawn up as incomplete and, often, being punished for one mistake or another. Post the second world war, with a rising number of disabled populations across the world, a sea change in the definition began to take effect across the global north. Disability was becoming more of a humanitarian issue than an ailment in need of either cure or erasure. By the 1970s, this change was forceful and anchored enough to bring in a categorical redefinition of disability. It changed from something affecting an individual to an identity marker enforced by social infrastructures and systems. Thus arose the academic field of Disability Studies: a discipline which sought to (and continues to seek to) change not only how disabled subjects were conceptualized but also ensure trickle down measures at the level of the rights of disabled people. That the United Nations and, more recently, the Indian government has brought about similar changes in policy making and governance regarding the disabled populations of the world and this nation stands testament to the way Disability Studies has methodically functioned to amend the very phenomenology of disability.

Much like all academic disciplines, Disability Studies has its own historical evolution and, subsequently, operative methodologies. It works through constant research across disciplinary boundaries to bring about and create anew ideas which may modify the way disability has been constructed and constituted. The Centre for Disability Research and Training, SGTB Khalsa College, Delhi University (CDRT, SGTB Khalsa College) has been instituted in 2023 through an MoU with the Centre for Disability Research and Training, Kirori Mal College, Delhi University (CDRT, KMC) to promote research and training in Disability Studies among the stakeholders of the college. It was formed with the singular aim of popularizing Disability Studies among the students and faculties of the college while helping out, wherever necessary, the policy development of the college to ensure a more inclusive atmosphere. Towards the same, the CDRT of the college has organized orientation sessions for students and one weeklong faculty development program for the teachers of higher education institutions across the nation.

Guru Angad Dev Malviya Mission Teacher Training Centre

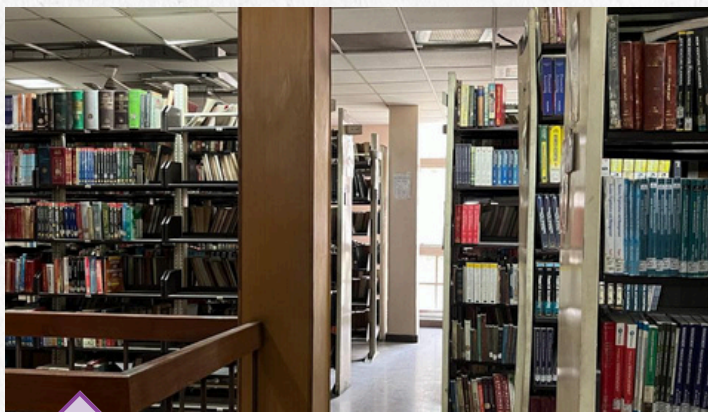
This is a centre of the University Grants Commission (UGC) under the MMTTP scheme of the Ministry of Education, Government of India. It has been selected to implement the next phase of training programmes for implementing NEP-2020 due to the massive training done since 2016 under GAD-TLC. There were 112 centres in the beginning and now there are 144 MMTTC's across the country of which only 4 colleges have been awarded these centres from around 45,000 colleges in India. Prof. Vimal Rarh has worked as Member of the Four-Member National Level Expert Committee at UGC for formulating the guidelines for functioning of all MMTTCs across the country.

A Grand total of 610 events with 1,15,501 beneficiaries were organised till March 2025.

MATA GUJRI LIBRARY



The college Library is a well- stocked Library with a collection of more than 1,45,300 books, titles on different disciplines, 7 Indian journals, 28 Magazines and 27 Newspapers. The library has an institutional membership with the UGC-N-LIST program. The library is connected with Delhi University wide area campus networking system and provides access to electronic resources to its users from Delhi University Library System (DULS) and UGC-INFONET Consortium. A student becomes a member of the library automatically after taking admission to the College. The Library has an excellent collection of text, general and reference books to support academic requirements of students and faculty members. It caters the needs of the students at Undergraduate and Postgraduate level to support research and learning. The Library services are automated. The Annual General Budget of the Library for the books is to the sum of Rs. 13,65,000/- (Rupees Thirteen Lakhs Sixty Five Thousand Only). Library has a separate section of 8000 classics and other reference books on Sikh studies. Around 2000 books of various subjects are added annually.





The library is computerized and books are bar-coded and made easily accessible through OPAC (Online Public Access Catalogue). The library has gate security check system with 32 CCTV cameras installed to monitor. The library preserves all the editions of the college magazine “THE TEGH” with the first edition published in 1953.

The Library is housed in three floor building. It has been organized as follows:

- The ground floor of the Library has circulation counter, online public access catalogue, processing section and stacks.
- The first floor has the Text -books section, Reference- books section, Periodical section and Teacher’s reading room.
- The second floor is a reading room with seating capacity of 200 students,
- LCD projector is also installed on the second floor of the Library which can be used for orientation and training programs.

Workshops & Training Programmes organized by the Library

Library Orientation Programme: the Orientation Programme is conducted at the commencement of new academic session every year. Students were oriented towards library for its collection, services, and facilities etc. in batches.

N-LIST Demo Classes: twice in a week to train the students with e-resources and also collect the feedback.

Library Internship Programme: Library Science students have been recruited as Internee for one month in the College Library. They have been trained to work in all sections of the Library.

New Arrival List: The list of the new books added to the library is prepared on the computer and is displayed in the reading hall periodically for the Information of the users.

Question Bank and Syllabus: Library provides scanned and hard copies of previous year question papers and syllabus of various subjects for consultation and Xerox.

New Initiatives:

1. The process of making the library fully air conditioned is underway.
2. The web page of the Library is also functional for all.

INFRASTRUCTURAL AMENITIES

ATM

The college campus is equipped with an ATM, providing convenient banking access for students, faculty, and staff. Located at the main gate, the ATM offers 24/7 access for cash withdrawals, balance inquiries, and other essential banking services. It supports various banking networks, ensuring that individuals from different banks can use the facility. The presence of the ATM significantly enhances the convenience of managing personal finances on campus, especially during busy academic schedules.

BANK

A branch of Punjab and Sind Bank is conveniently located on the college campus, offering a range of banking services to students and faculty. The bank is open Monday to Saturday, from 9:00 AM to 5:00 PM, and remains closed on Sundays. It provides a full suite of services, including account management, lockers, and loan facilities. The bank plays a crucial role in facilitating fee payments and processing employee salaries. Additionally, it regularly organizes awareness programs on financial literacy to support the campus community in making informed financial decisions.

CANTEEN

The college canteen is the hub of a vibrant college community, it provides hygienic, affordable and nutritious meals throughout the day. Located in a central area, the canteen provides a variety of options, including snacks, beverages, lunch thalis and other vegetarian and non-vegetarian dishes, catering to diverse tastes and dietary preferences. The canteen is well-ventilated and spacious with comfortable seating. The canteen also offers quick delivery service to various wings and departments to faculty and provides its services for various college events and programmes. The canteen remains open during regular college hours, making it a convenient option for students looking to refuel between classes.

GIRLS' COMMON ROOM

Girls' Common Room: The college has a GCR where the female student can rest, study, and socialize. It is equipped with seating arrangements, a mirror, washroom and basic first-aid facilities. The room may also host informal gatherings or discussions. Its location within the campus ensures easy accessibility to privacy and safety. Cleanliness and maintenance are prioritized to ensure a welcoming atmosphere.

GYM

Gymnasium is in the sports complex of the college with high power training equipment for aiding the college community. It is open on regular working college days.

MEDICAL

The institution has an on campus clinic in room no. 21 with the General Physician available within college timing. First aid kits are also available at key locations across the campus, including the staffroom, administration office, library, and hostel, providing quick access to basic medical supplies in case of minor injuries or health issues.

STUDENT COUNSELLOR

A Counselling Psychologist is available in the college from 9:30 am to 5 pm in room no. 18 and takes counselling sessions as per the request and bookings. Counseling focuses on helping the students through challenges like academic pressure, feeling overwhelmed, career choices or personal life issues. The college encourages the students who are struggling, to seek help in this regard in order to feel better.

NESCAFE KIOSK

Nescafe kiosk is located close to Science Block ensuring that quick meal outlets are present across the campus. The kiosk serves hot and cold coffee options, sandwiches, wraps and other snacks. Open during regular college hours, the kiosk caters to the needs of the college community. With its quaint atmosphere, it features a few outdoor benches for seating and operates on a self-service model, offering only on-site meal orders and quick refreshments.

PHOTOCOPY

The photocopy kiosk, situated in the college foyer, ensures quick and efficient access to academic resources. It provides essential photocopying services for students and faculty. The kiosk is open during college hours, making it a convenient stop for students needing study materials or faculty requiring administrative support. The services are available for free and also at affordable prices for the college community.

WI-FI INFRASTRUCTURE

The college campus is well connected through WI-FI, aiding the modern academic demands. Reliable and high-speed internet is available in all the common areas, classrooms, library and hostel, aiming to ensure seamless internet availability in both academic and recreational spaces. The college implements login protocols to ensure the security and protection of the data. Students and faculty can obtain the login credentials from the library after submitting the required information. The institution prioritizes uninterrupted Wi-Fi access to facilitate collaboration, digital engagement, and the global exchange of academic resources.

MATA GUJRI HOSTEL

In response to the growing number of female students from outside Delhi, Sri Guru Tegh Bahadur Khalsa College decided to establish hostel facilities in 2012. The hostel, named after the Sikh martyr Mata Gujri Ji, is situated in the vicinity of college campus and accommodates 147 undergraduate female students.

Inaugurated in 2012 by Kapil Sibal, then Minister of Human Resource Development, the hostel began operations under the wardenship of Prof. Surinder Kaur. The facility boasts a solar-powered rooftop and features 49 rooms, each equipped with air conditioning and attached washrooms. Each room accommodates three students, offering personal study desks, wardrobes, and beds for each occupant.

Mata Gujri Ji, the wife of Sri Guru Tegh Bahadur Sahib (the Ninth Guru of Sikhs) and mother of the fearless saint-soldier Sri Guru Gobind Singh, stands as a symbol of compassion, commitment, and unwavering faith. She is also the grandmother of the martyred Sahibzadas - Ajit Singh, Jujhar Singh, Zorawar Singh, and Fateh Singh. Known for her courage and strength, Mata Gujri Ji played a significant role during the turbulent period from 1650 to 1705 in opposing the tyranny of India's rulers. Like her husband, Guru Tegh Bahadur Ji, Mata Gujri Ji stood firmly for social justice and an egalitarian society, refusing to accept authoritarianism. Her life story continues to inspire and guide the younger generation.

In addition to the various facilities provided, the hostel ensures that students enjoy a comfortable and pleasant stay, with a strong focus on their well-being and happiness. Dr. Nimmi Singh Jandu is currently serving as the Warden of Mata Gujri Hostel.

GENERAL HARI SINGH NALWA HOSTEL

Named in honour of General Hari Singh Nalwa, the legendary Commander-in-Chief of Maharaja Ranjit Singh's army, this hostel commemorates one of the most courageous and celebrated warriors of the Sikh Empire. Under his remarkable leadership, the empire's frontiers expanded beyond the Indus River to the mouth of the Khyber Pass.

The General Hari Singh Nalwa Hostel is a girls' hostel, inaugurated on 11th March 2021. It officially opened for occupancy on 1st February 2025. The facility houses 42 fully air-conditioned rooms, each designed to comfortably accommodate three students.

Dr. Parminder Kaur currently serves as the Warden of the hostel.

Both hostels are equipped with essential modern amenities, including a messaging service, high-speed Wi-Fi, 24x7 security, housekeeping, and laundry services.

EXTRA CURRICULAR ACTIVITIES SOCIETIES

ART

ACROSTIC- THE POETRY SOCIETY
ANKUR- THE THEATRE SOCIETY
CHALCHITRA- THE FILM MAKING SOCIETY
ETRAM- THE WESTERN DANCE SOCIETY
PINHOLE- THE PHOTOGRAPHY SOCIETY
STROKES- THE FINE ARTS SOCIETY
SWARANG- THE MUSIC SOCIETY
VASTRAM- THE SARTORIAL SOCIETY

CULTURAL

ANHAD- THE DIVINITY SOCIETY
BHANGRA- FOLK DANCE
TEGH- THE GATKA SOCIETY
LUDDI- GIRLS FOLK DANCE SOCIETY
FATEH- THE SIKH HISTORY SOCIETY

CO-CURRICULAR

180 DEGREES CONSULTING
CONFERO- MUN SOCIETY
CONNECTING DREAMS FOUNDATION
DADS- THE DEBATE AND DISCUSSION SOCIETY
ECOCLAN- THE ENVIRONMENTAL CLUB
ENACTUS- THE SOCIAL ENTREPRENEURSHIP SOCIETY
FINWISORY- THE HIGH FINANCE SOCIETY
GANDHI STUDY CIRCLE
IGNITE- THE PLACEMENT CELL
JUNTO- THE CIVIL SERVICE SOCIETY
KHALSA CONSULTING GROUP
KHALSA STREET- FINANCE AND INVESTMENT CELL
ROTARACT CLUB
TEDX
TEGHPRENEURS- THE E CELL

SPORTS



Sports in SGTB Khalsa College began with the singular aim of promoting sports and physical activities among the students of the college. Over time, the college's sporting activities have become one of the best in the University and the college's unique selling point.

Given that Khalsa's sports have attained both national and international recognition, the college provides excellent and specialised infrastructures to its sports students alongside much required financial assistance. The college has produced world renowned sports persons like Mohinder Amarnath (Cricket), Ashok Dewan (Hockey), Harinder Singh (Hockey), Dalbir Singh (Wrestling). Shymalal Ji (Gymnast), Maninder Singh (Cricket). Kiran Sandhu (Basketball). Vijay Mala Bahnot (Shotput), and Amoj Jacob (Athletics) among others.

To keep up this excellent streak, the college organises two major national sporting events across the year: The Sahibzada Zorawar Singh and Sahibzada Fateh Singh T20 Cricket Tournament under a floodlight and the Baba Deep Singh Hockey and Basketball Tournament.



NATIONAL CADET CORPS (NCC)



The National Cadet Corps (NCC) is a national organization focused on fostering leadership, discipline and a sense of national responsibility among youth. The Sri Guru Tegh Bahadur Khalsa NCC Company serves as a representative unit at the college level and functions under the Delhi Directorate, with two active units (5DBN and 2DGBN) which has provided the total strength of the Senior wing (girls) is 107 and the total strength of the Senior Division (boys) is 160 . It provides cadets with opportunities to participate in activities such as parades, drills, camps, and community service projects. These initiatives promote teamwork, physical fitness, and a spirit of service, contributing to cadets personal growth and the broader objective of national development.

The motto of the NCC is “Unity and Discipline” and the Sri Guru Tegh Bahadur Khalsa NCC Company envisions to empower young individuals to become responsible citizens. It aims to inculcate qualities such as leadership, discipline, and a sense of service in students and prepares them to face challenges with firmness and work collectively for the betterment of society.

Through persistent work and dedication, the NCC Company intends to inspire cadets to become leaders who embody the values of selflessness, courage and a deep sense of responsibility toward the nation.

Sri Guru Tegh Bahadur Khalsa NCC Company aims to shape cadets into responsible citizens by providing them with opportunities to grow through military-based training, social service, and leadership activities. Cadets in the company participate in a variety of programs, including drills, adventure sports, cultural events, and public service initiatives. Through its structured training and guidance, Sri Guru Tegh Bahadur Khalsa NCC Company continues to uphold the mission of the NCC and carries forward the values of discipline, leadership, and unity, inspired by the teachings of Guru Tegh Bahadur Ji.



NATIONAL SERVICE SCHEME (NSS)

The National Service Scheme (NSS) is a central sector scheme of the Government of India, Ministry of Youth Affairs and Sports and was launched in Mahatma Gandhi's centenary year, 1969. It is a voluntary association that provides youth across educational institutions the opportunity to take part in government-led community service activities and programs.

With its strong commitment to the NSS motto 'Not Me, But You', the NSS unit of Sri Guru Tegh Bahadur Khalsa College (NSS-SGTB KC) strives to instil among its student volunteers the values of democratic living, equality of opportunity, and selfless service towards those less privileged than themselves.

NSS SGTB Khalsa College takes pride in its vast pool of immensely zealous volunteers who show a profound amount of initiative and eagerness in undertaking all kinds of social services, as well as identify and resonate with the cause and aim of NSS. Thus, in such a manner, NSS tries to bridge the gap between grassroots needs and governmental efforts by engaging in various activities. We currently have five projects in operation apart from numerous other regular activities. The projects are : Project Jeev, Project Dhara, Project Seekho, Project Sehat, and Project Khwaish.





M6W6+G28, UNIVERSITY OF DELHI,
ARTS FACULTY ROAD,
UNIVERSITY ENCLAVE,
NEW DELHI, DELHI 110007
+91 97176 22113

WEBMASTER@SGTBKHALSA.ONLINE



Official Website



Instagram



Facebook



Twitter



Youtube



College Magazine

Created under the patronage of Prof. Gurmohinder Singh (Principal) and mentorship of Prof. Manoj Kumar Nimesh.
Core: Ms. Armeen Kaur Ahuja (Assistant Prof., Dept. of English), Aakarshit Sinha B.A (Hons.) Economics &
Simar Singh Luthra B.A (Hons.) Economics
Faculty contributors: Dr. Indulekha P. Roy Burman and Dr. Roopm Jasmeet Kaur