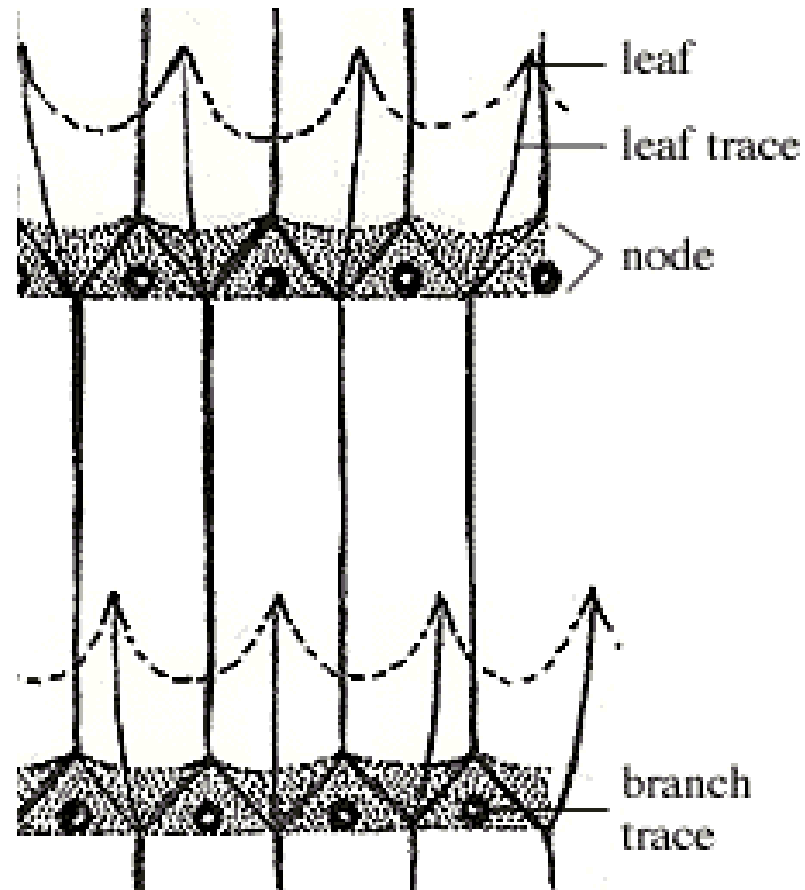


**Sheet 1: Habit sketch**



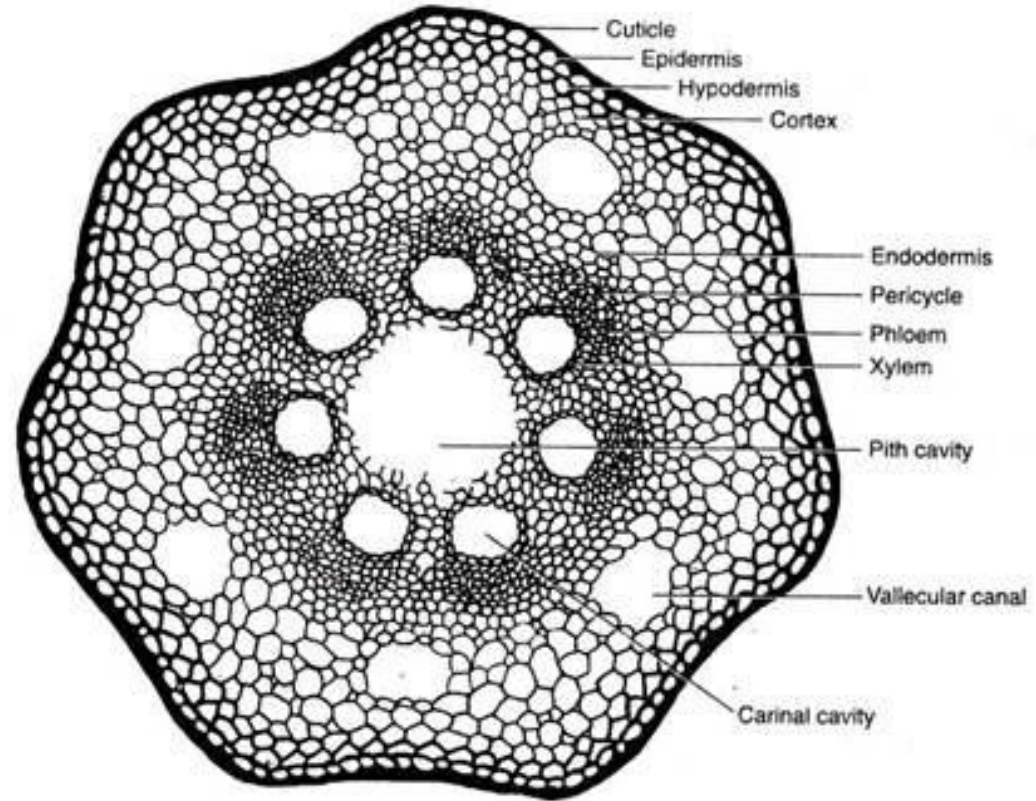
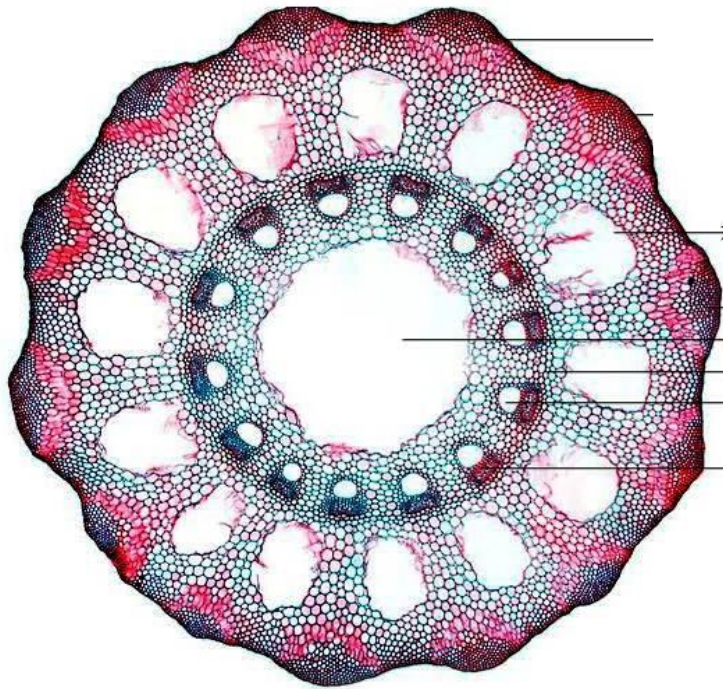
Sheet 1:

Mature and young cone



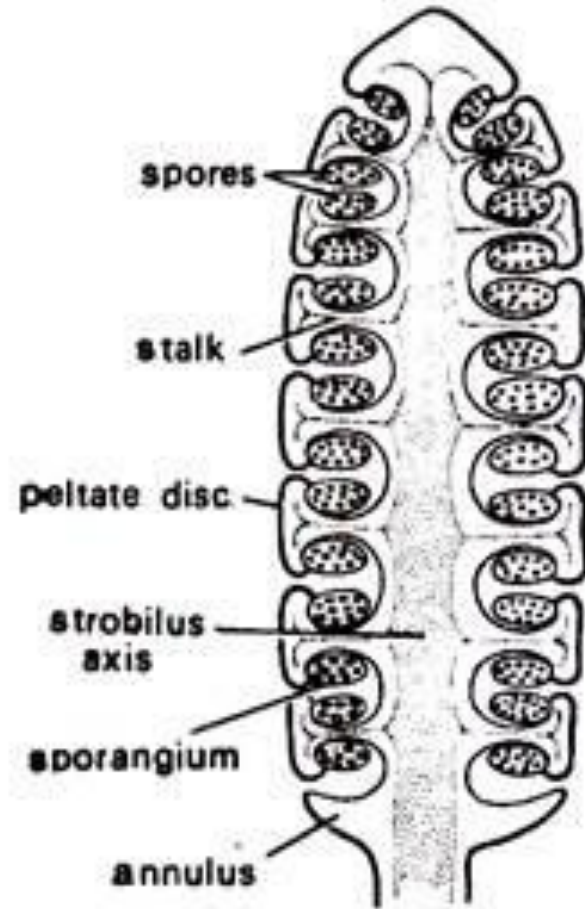
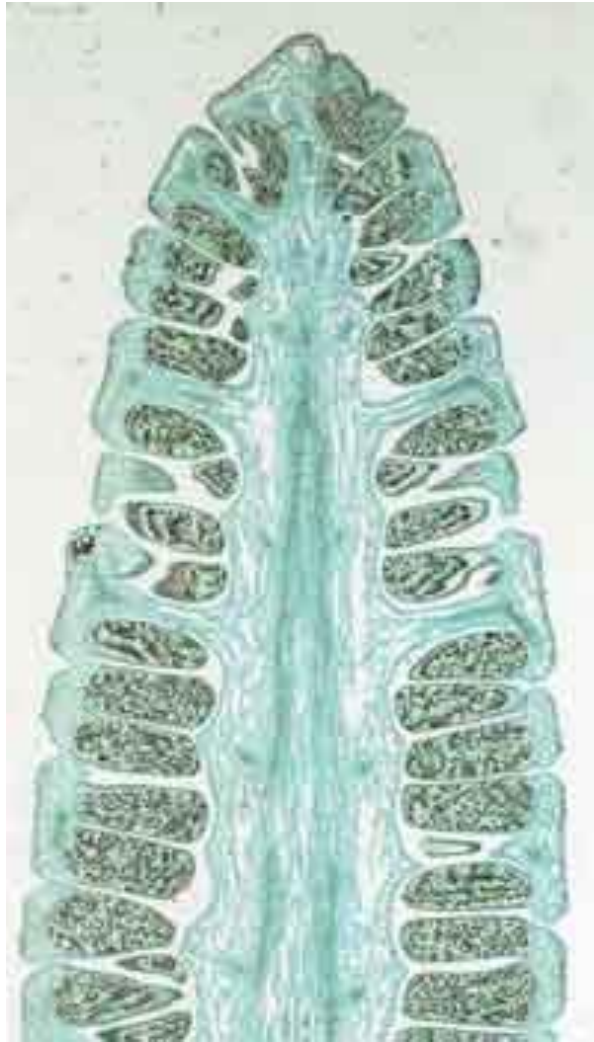
## Sheet 1: w.m. leaf sheath

*Just draw a line diagram don't do shading and no need to make branch trace*

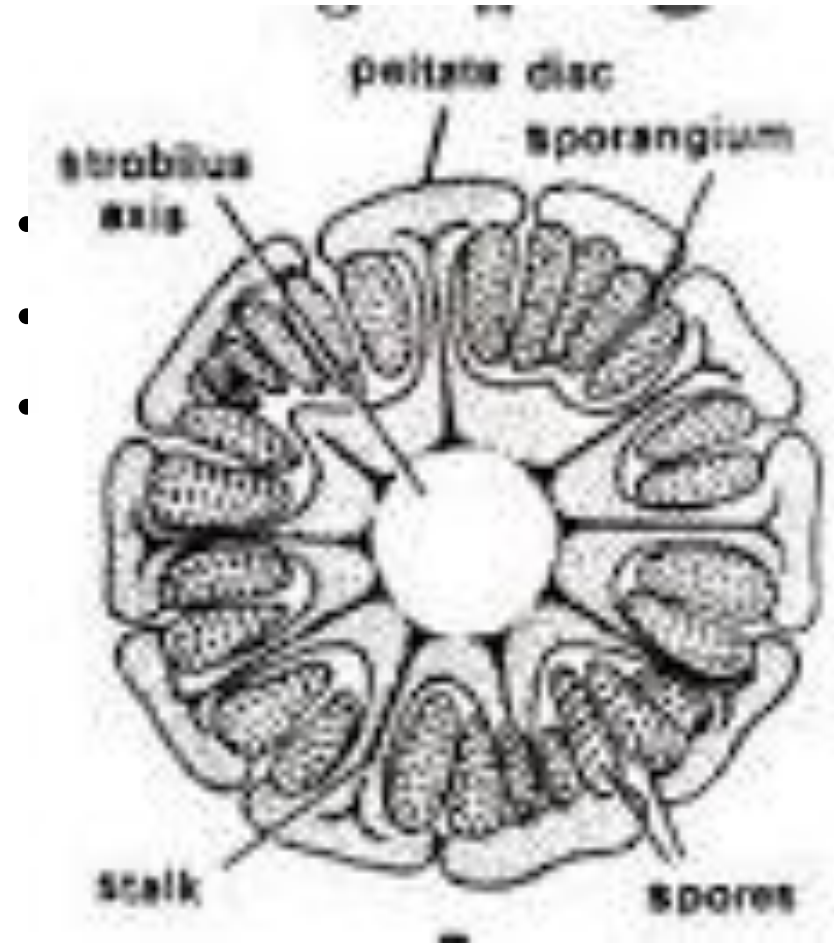
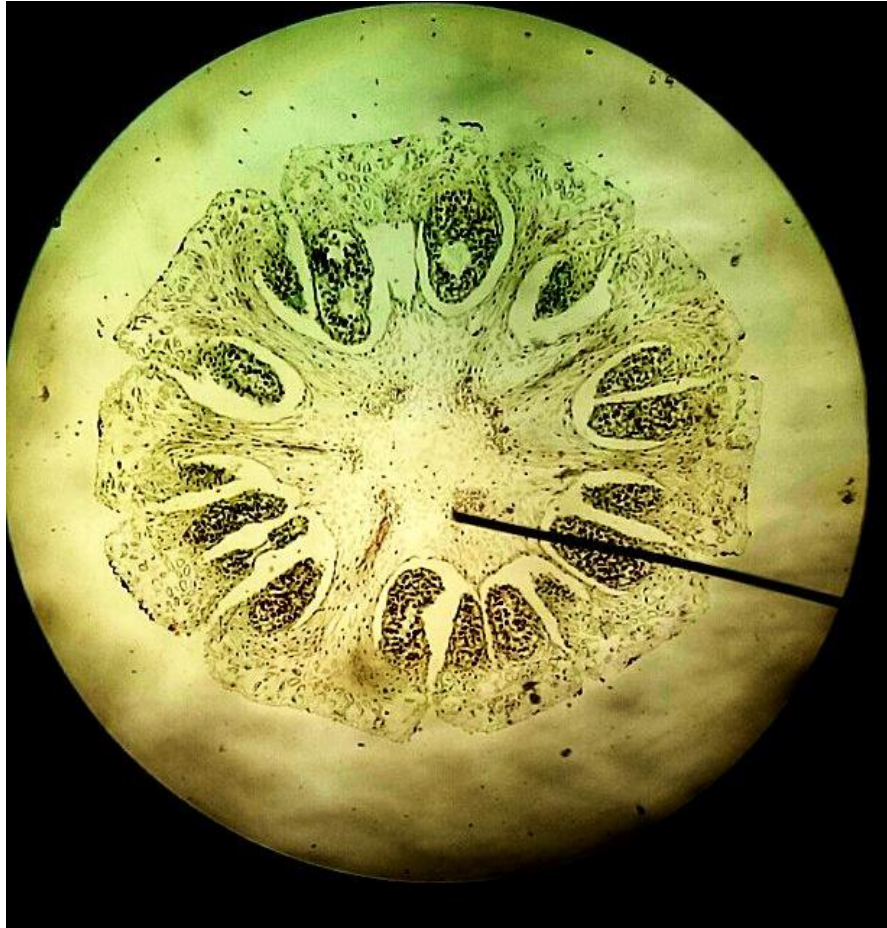


Slide 2: T.S. Internode; Diagrammatic and a part cellular

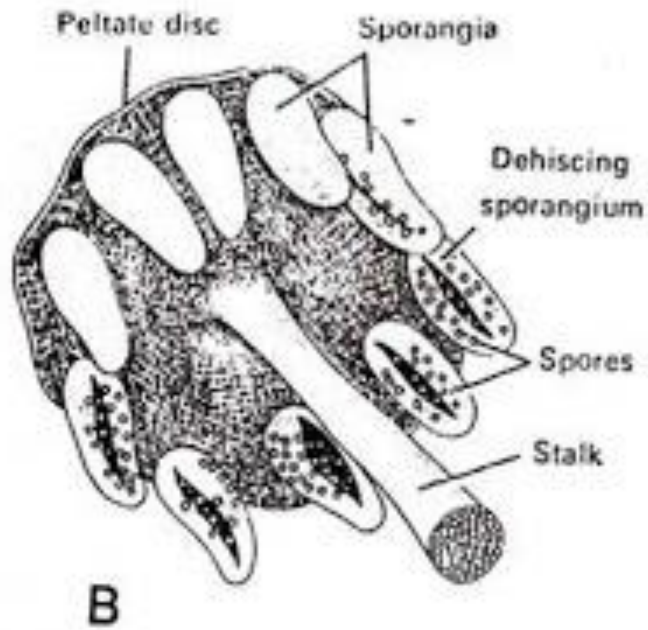




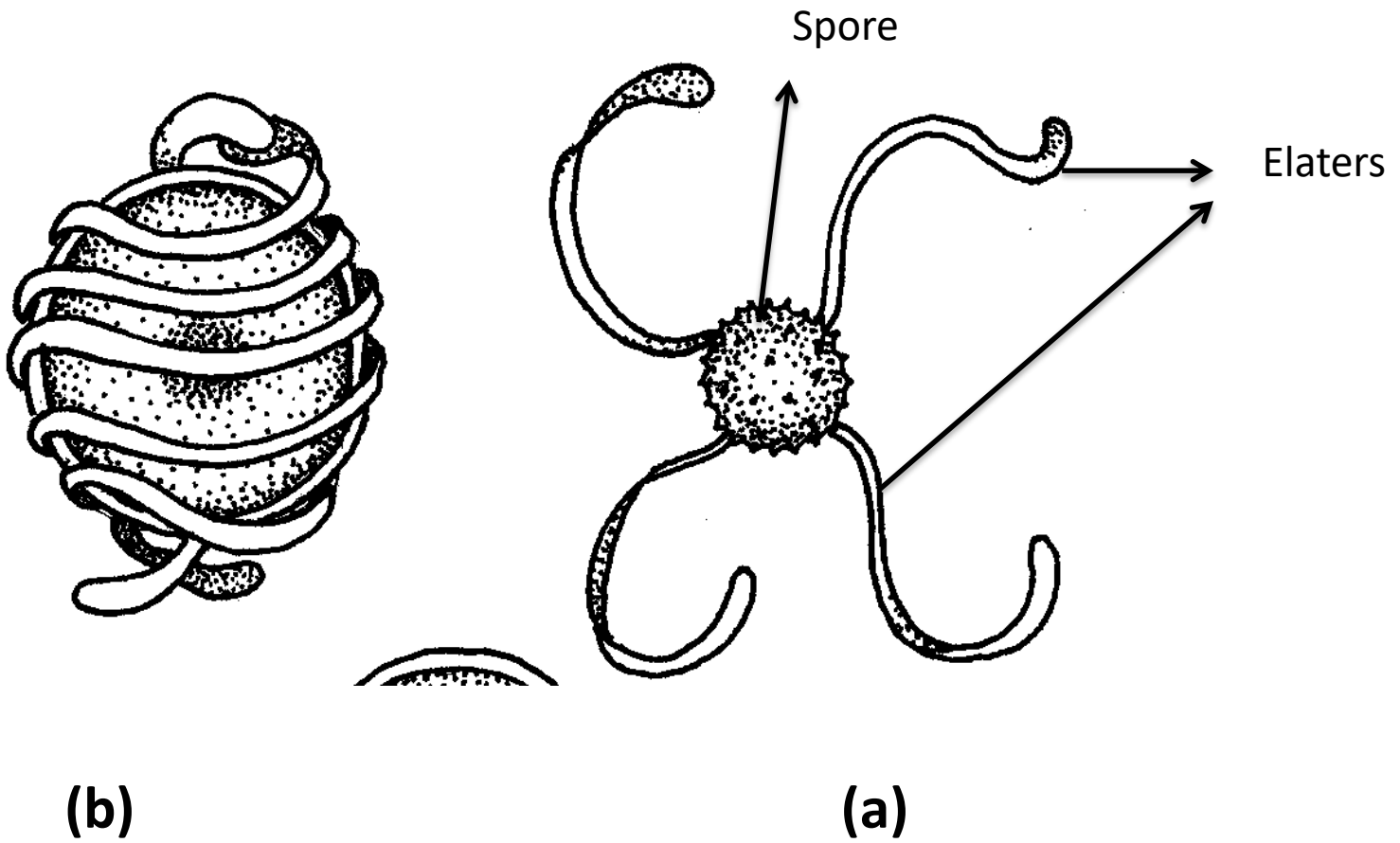
Sheet 3: L.S. Cone



Sheet 3: T.S. Cone



Sheet 4: w.m. sporangiophore



Sheet 4: w.m. spores with elaters  
**a) Dry and b) wet condition**