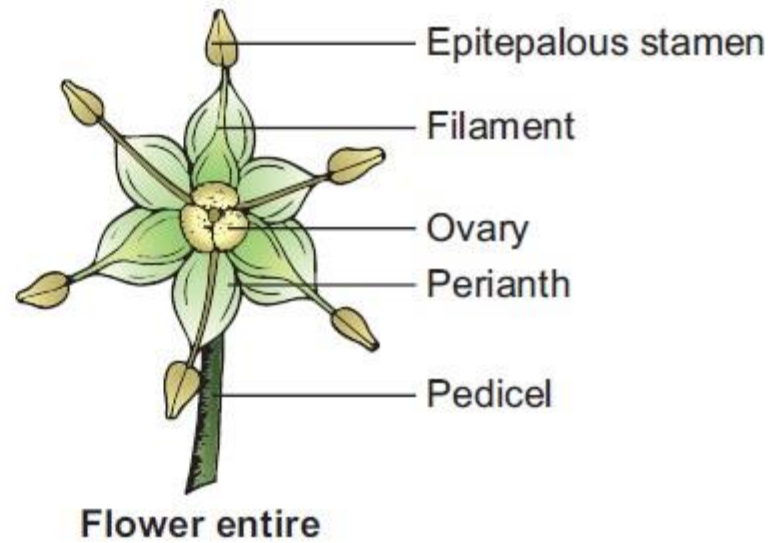
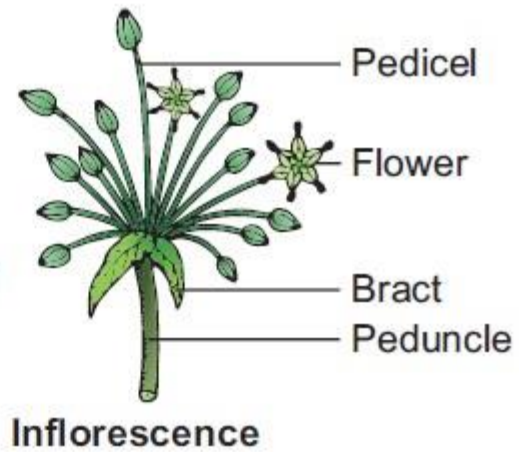
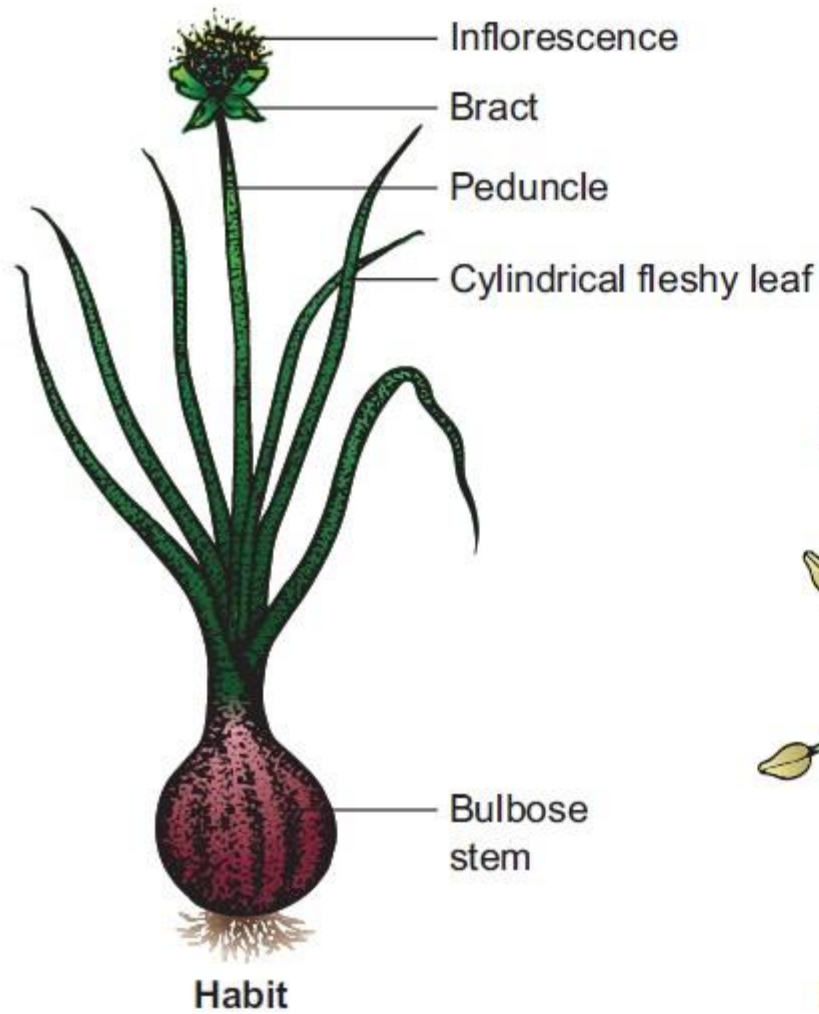


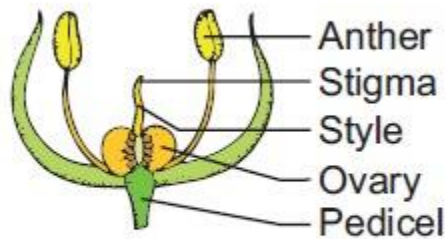
Genus: *Allium*

Family: Liliaceae

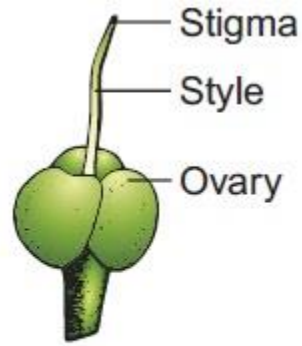
Common Name: Onion



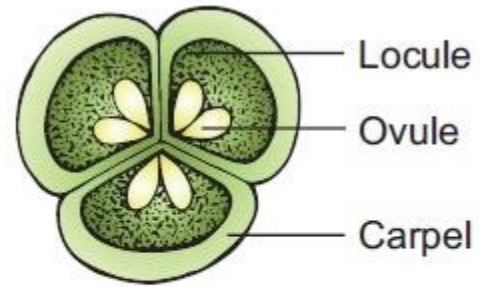




L.s of flower

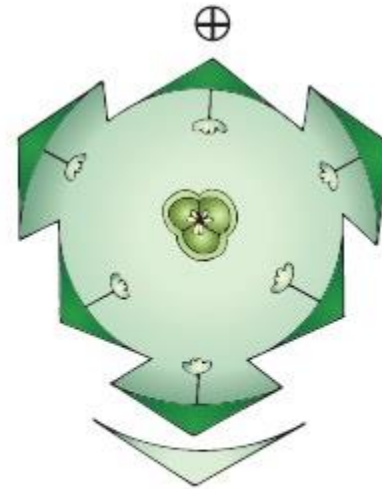
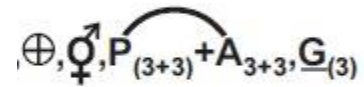


Gynoecium



C.S. of ovary

Floral formula



Floral diagram

Leaves: A cluster of radical leaves emerges from the underground bulb, cylindrical and fleshy having sheathy leaf bases with parallel venation.

Inflorescence: Scapigerous i.e. the inflorescence axis (peduncle) arising from the ground bearing a cluster of flowers at its apex. Cymose umbel subtended by spatheous bracts.

Flower: Small, white, ebracteate, pedicellate, complete, trimerous, actinomorphic and hypogynous. Flowers are protandrous.

Perianth: Tepals 6, white, arranged in two whorls of three each, syntepalous showing valvate aestivation.

Androecium: Stamens 6, arranged in two whorls of three each, epitepalous, apostamenous /free and opposite to tepals. Anthers ditheous, basifixed, introse, and dehiscent longitudinally.

Gynoecium: Tricarpellary and syncarpous. Ovary superior, trilocular with two ovules in each locule on axile placentation. Style simple, slender with simple stigma.

Please refer to Gurcharan Singh book Page no. 437 for further elaboration on *Allium*. Please draw the well labelled diagram and complete the write-ups.

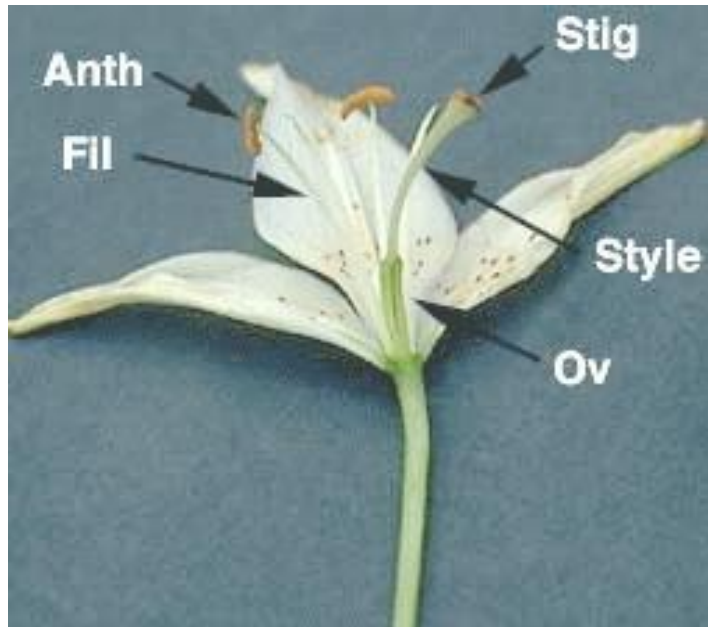
Genus: *Lilium*

Family: Liliaceae

Common Name: Lily



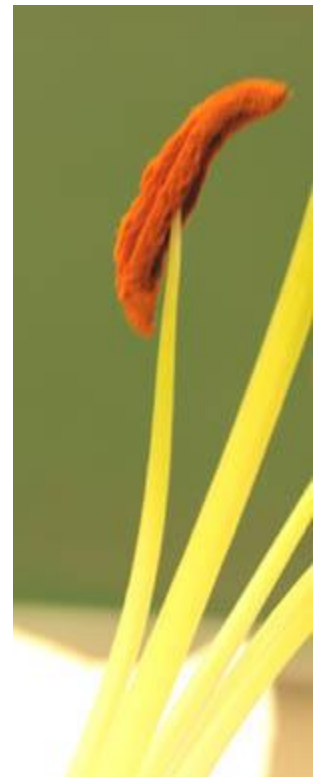
Details of LILY



L S of Flower

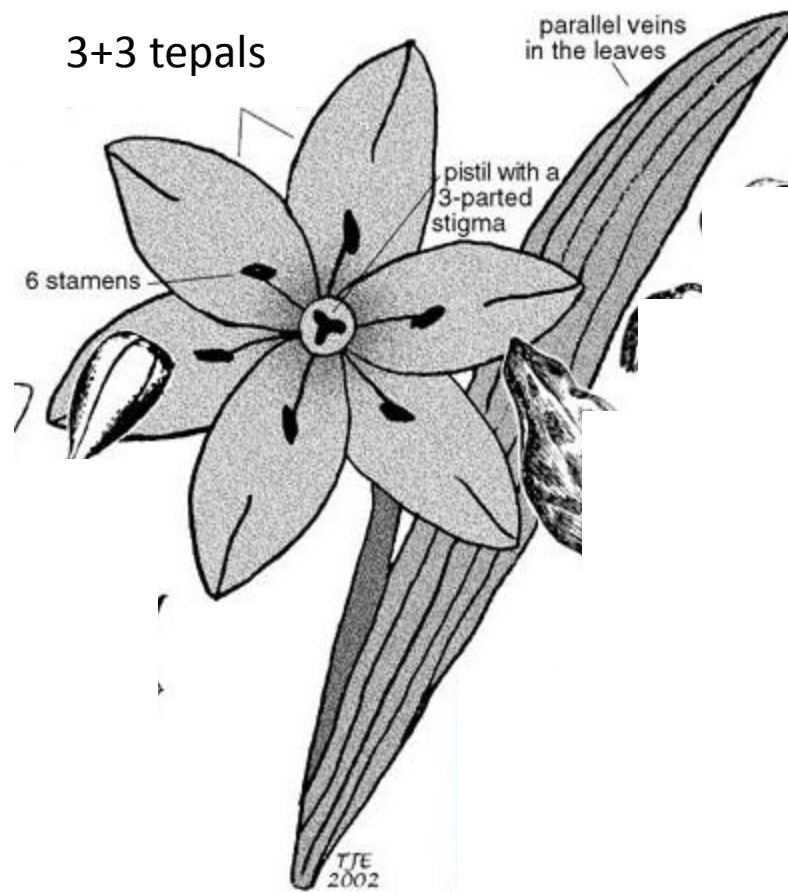
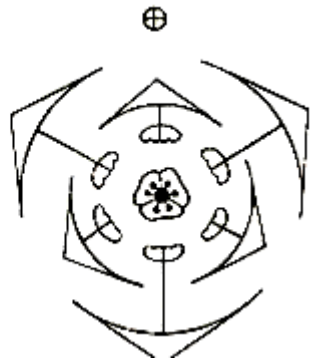


Trilobed stigma



Versatile anther

⊕ ♂ P₃₊₃ A₃₊₃ G(3)



Complete the write up part from Gurcharan Singh Page number: 430.
Lilium polyphyllum