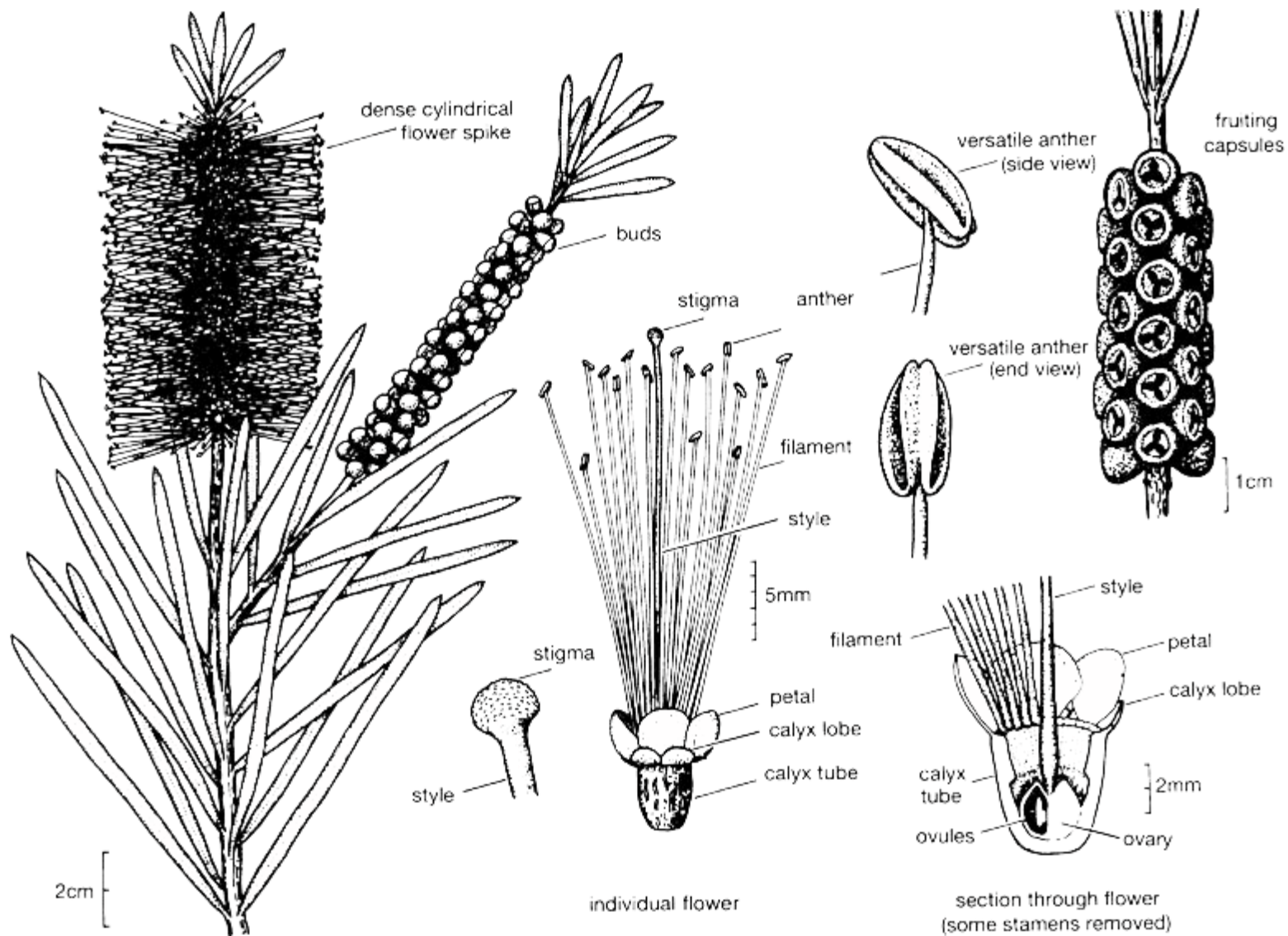


Genus: *Callistemon*

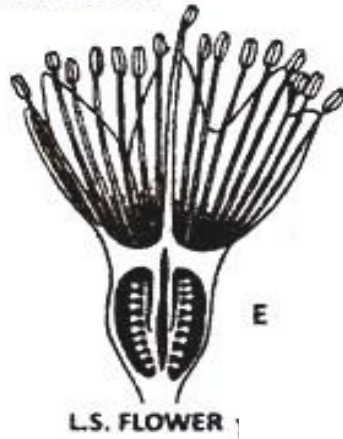
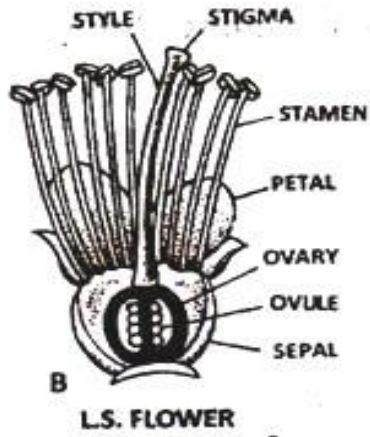
Family: Myrtaceae

Common Name: Bottle Brush





Reference: <https://www.anbg.gov.au/callistemon/>



Leaf: Alternate, Simple, Petiolate, Exstipulate, Lanceolate, Unicostate reticulate venation, Gland dotted.

Inflorescence: Terminal spike.

Flower: Sessile, Ebracteate, Bisexual, Actinomorphic, Epigynous, Pentamerous.

Calyx: 5 Sepals, Gamosepalous, green adnate to ovary wall. Imbricate.

Corolla: 5 Petals, Polypetalous

Androecium: ∞ Stamens, Inward in bud, Filaments long brightly coloured, Connate at the base, Staminal sheath, Anthers small, Versatile, dorsifixed, Extrorse.

Gynoecium: 3-4 Carpels, Syncarpous, Ovary inferior, Number of locules equal to number of carpels, Axile placentation, Style long curved, Stigma simple.

Fruit: Capsule

Floral Formula: $\text{EBr, } \oplus, \text{ } \begin{array}{c} \nearrow \\ \text{Q} \\ \text{+} \end{array}, \text{K}_{(5)}, \text{C}_5, \text{A}_{(\infty)}, \text{G}_{(3-4)}$

Please refer to Gurcharan Singh book Page no. 508 for further elaboration on *Callistemon*. We have provided you 2 figures and with the help of book you can draw the well – labelled diagrams.

Genus: *Ranunculus*

Family: Ranunculaceae

Common Name: Butter cup



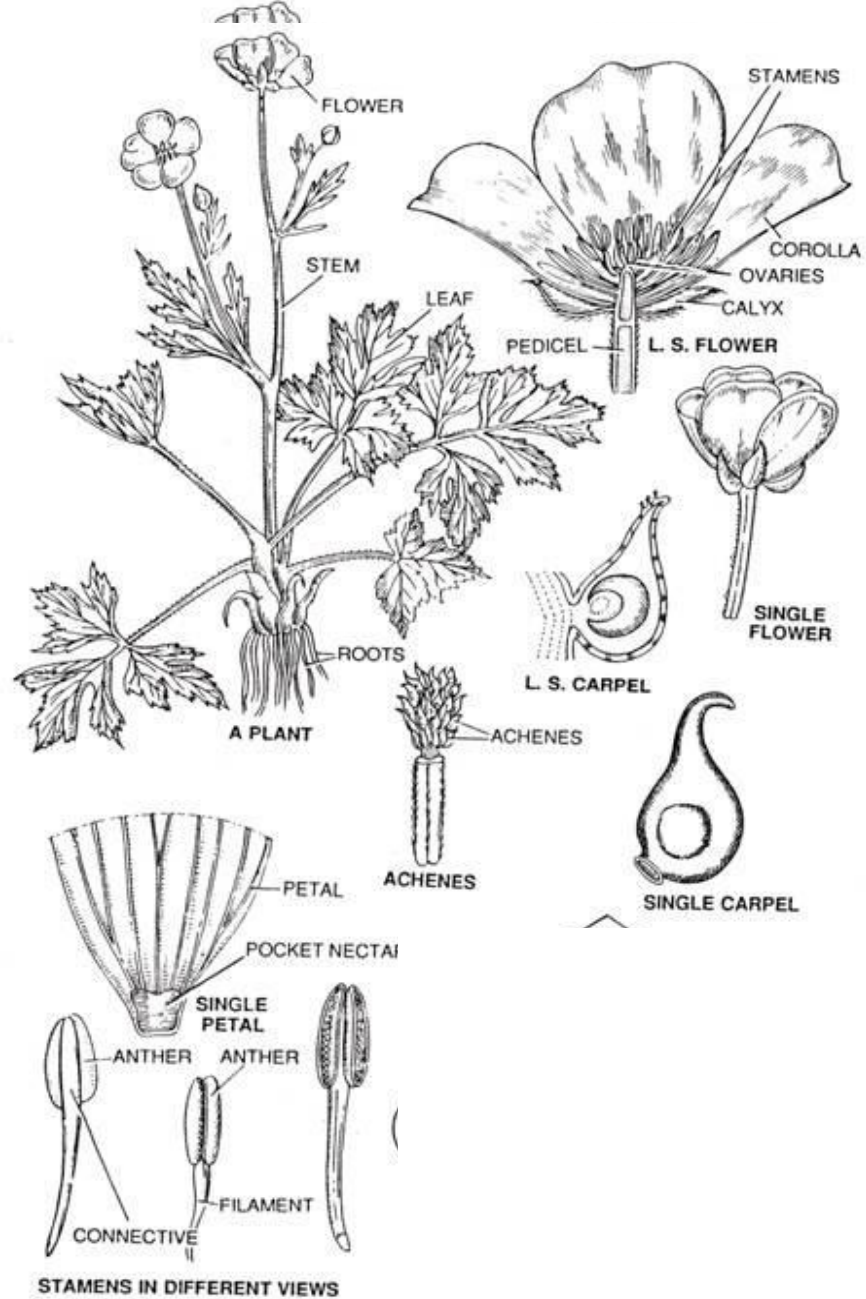


Fig. 21.2. Ranunculaceae

Leaf: Simple, petiolate, radical with long petioles, trilobed, multicostate reticulate venation

Inflorescence: Cymose.

Flower: Pedicellate, hermaphrodite, complete, actinomorphic, yellow and hypogynous.

Calyx: Five, polysepalous, petaloid, quincuncial, i.e., imbricate in bud condition.

Corolla: Five, polypetalous, yellow, oblong, imbricate.

Androecium: Indefinite, the stamens arranged spirally, polyandrous, filaments long, anthers extrorse, elongated, yellow and basifixed.

Gynoecium: Indefinite (polycarpellary), apocarpous, ovary superior, unilocular, basal placentation.

Fruit: An etaerio of single seeded achenes.

Floral formula; $\oplus \overset{\text{♂}}{\underset{\text{♀}}{\text{O}}} K_5, C_5, A_\infty, G_\infty.$

Please refer to Gurcharan Singh book Page no. 461,462 for further elaboration on *Ranunculus*. With the help of book you can draw the well – labelled diagrams.